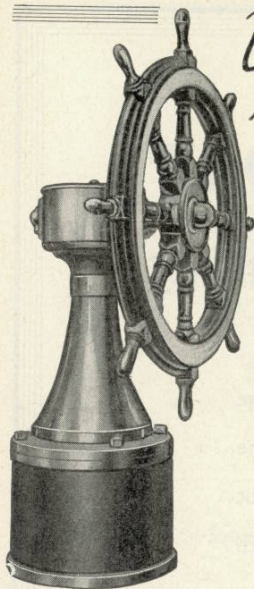
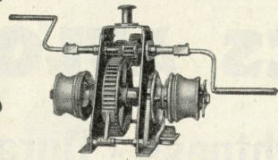


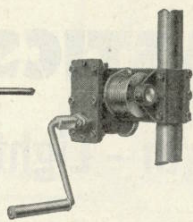
Yacht DECK MACHINERY



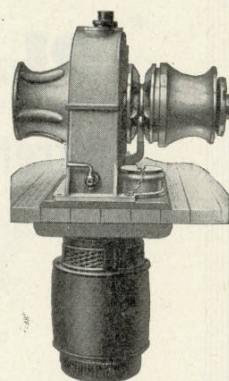
POLISHED BRASS PEDESTAL STEERING GEAR



A HAND ANCHOR WINDLASS



A BOAT HOISTING WINCH



AN ELECTRIC ANCHOR WINDLASS

The illustrations show a small selection of the wide range of yacht deck machinery designed and manufactured by us. This equipment includes capstans, windlasses and steering gear of all kinds, for hand or power operation. Thomas Reid yacht fittings are beautifully made and finished, and have been installed in many of the finest vessels ever built.

Catalogue on request

THOMAS REID & SONS, (PAISLEY) LTD.
Engineers • PAISLEY • SCOTLAND

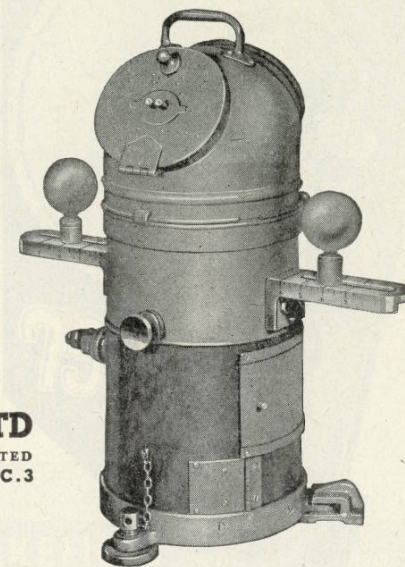
Phone: PAISLEY 4117 to 4118

*Grams: "REID, PAISLEY."

London Agents: FERGUSON & TIMPSON LTD.
PORTSOKE HOUSE, 155, MINORIES, E.C.3

MANY OF YOU WILL KNOW 'FAITHFUL FREDDY'

THE friend of more troublesome times, he is now available to yachtsmen for happier peaceful missions. A thoroughbred from the Hughes range of Liquid Compasses reflecting in every line the quality and craftsmanship so closely associated with Hughes products, and known to men who sail, everywhere. We shall be glad to forward a full specification with price on request. You will find a copy of the new Yacht Navigators catalogue, giving complete range of instruments, extremely interesting.



MARINE INSTRUMENTS LTD
MARINE DIVISION OF KELVIN AND HUGHES LIMITED
107 FENCHURCH STREET, LONDON, E.C.3



39

"THERE'S POWER BEHIND IT!"



The ideal power unit for a small tender must be reliable, economical, smooth-running, quiet and sturdy, with reverse for easy manoeuvrability when alongside—in other words, it must be a B.M.B. "Britannia" Outboard Motor.



"BRITANNIA"
Outboard Motor
Britain's Only Lightweight Twin
Marine Division Section 202

THE
BRITISH MOTOR BOAT MANUFACTURING
CO., LTD.,
Britannia House, Ampton Street, London, W.G.1
(nr. Kings Cross)

Telephone: TERminus 6361 (5 lines)

MOTOR SHOW EARLS COURT,
Stand No. 50, Ground Floor.

Don't spoil the ship
with a haiporth
of



REMEMBER THERE IS A CORRECT

RIPOLIN

FINISH FOR EVERY JOB



Write for colour card and
details of yacht enamels and special varnish.

RIPOLIN LIMITED
9 DRURY LANE, LONDON W.C.2

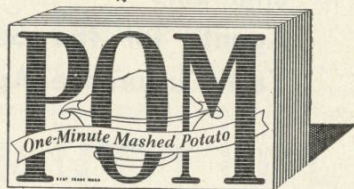
LONDON • PARIS • AMSTERDAM • CLEVELAND • TORONTO • ZURICH • BILBAO

POM ahoy!

MASH IN A FLASH FOR MEALS AFLOAT



Steaming, creamy mash, made in a minute—no peeling, no mashing, no drudgery—surely the tired yachtsman's dream. But POM is a dream come true, and making it is easier than falling overboard—just a matter of stirring the powder into hot water. A packet of POM sits very neatly on the galley shelf, and represents 5lb. of raw potatoes which would take up valuable stowage-space.

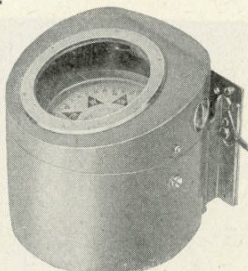


A DISH of mashed potato in a minute.

A NEW COMPASS for the Small Cruiser

Designed by
an Ocean Racing Yachtsman

The binnacle is made to fit on to a plate screwed to the bulk-head. Three plates are supplied with each binnacle thus enabling the owner to easily move the compass to alternative positions for either tack if desired. Two lubber lines set 180 degrees apart. A dry battery and bulb housed within the hood gives illumination without dazzle for between 12 and 14 hours. The compass card is marked clearly every two degrees from 0 to 360, thereby easing eyestrain for the helmsman.



LYMINGTON Compass

Specification.
 Brass binnacle with removable top, fitted with 4in. window. Electric light fitting and bulb within binnacle hood. Sestrel Deadbeat liquid compass 4in. diameter card marked every two degrees from 0 to 360. Supplied complete with three attachment plates.

Finish Admiralty Grey.

| | | | | |
|----------------|------------|------------|-----------------|--------------------------|
| Cat. No. 89794 | Card | Bowl | Binnacle Height | Dimension of Code CNIZE. |
| diam. 4in. | diam. 5in. | diam. 6in. | 6in. | plates 6in. x 4in |

WEIGHT NET. 10 lbs. GROSS 18 lbs. £16 16s. 0d.
complete with 3 attachment plates

Spare attachment plates can be supplied 30/- each. Add S to Code.

HENRY BROWNE & SON LTD., Barking, Essex

Telephone: RIPPLEWAY 4054-8 Telegrams: SESTREL BARKING

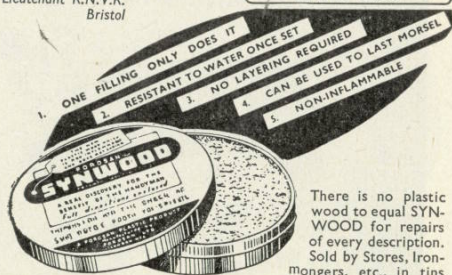
SERVICE DEPOTS—
LONDON: 71 Leadenhall Street, E.C.3 Phone: AVENUE 2156
GLASGOW: 49 West Nile Street CITY 6849
LIVERPOOL: 10 Dale Street CENTRAL 4844

THE VOICE OF EXPERIENCE

*A Naval Officer discovers the
five good reasons for using*

"I am in urgent need of some SYNWOOD for use on my yacht as I find it is the only plastic wood which really makes a good job."

Lieutenant R.N.V.R.
Bristol



There is no plastic wood to equal SYNWOOD for repairs of every description. Sold by Stores, Ironmongers, etc., in tins at 1/6d. and 7/6d. (large economy size).

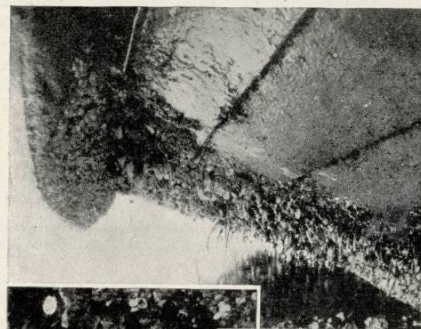
Made and sold only by:

POROSAN LTD., 65-66 CHANCERY LANE, LONDON, W.C.2

THIS IS THE BOTTOM OF
THE YACHT "AMETHYST"
AFTER 6 MONTHS' TEST

with
**TORPEDO
PLASTIK**

REGISTERED
TRADE MARK
ANTI-FOULING



The heavy nature of the fouling on the uncoated Test Patch seen above is clearly shown in the smaller photograph.

**New Plastic Protection for Wooden
Hulls gives 3 times the Life of
Ordinary Anti-Fouling Compositions.**

These photographs reveal the admirable condition of the underwater hull of the yacht "Amethyst" resulting from the application of a single coat of "TORPEDO PLASTIK" after a whole season. *The uncoated Test Patch was heavily fouled as shown by smaller photograph.* "TORPEDO PLASTIK" is applied cold like Paint and is easy to handle. Details from your usual dealer, or direct from the sole makers:—

**BRITISH ANTI-FOULING
PAINTS, LONDON.**

ROYAL MAIL HOUSE, LEADENHALL ST., LONDON, E.C.3



We imagine

nature provided the mermaid
with adequate protection

But we know

a perfect finish with a
hundred per cent protection
is provided by



**DRYNAMELS
BRISTOL FASHION
SUPERFINE MARINE
FINISHES**

EGAN & CO. LTD.,
Havelock Chambers, Queen's Terrace, Southampton.
Telephone Number Southampton 4061
Agents for Hampshire, Dorset and Isle of Wight.

THE EAST COAST YACHT AGENCY LTD.
Waldringfield, Nr. Woodbridge, Suffolk.
Telephone Number Waldringfield 280
Agents for Norfolk, Suffolk and Essex.

DRYNAMELS LIMITED, HALL GREEN, BIRMINGHAM, 28.