

# HUNTING IT OUT

IT is said you can buy anything in London if you know where to look for it. I have been hunting around town this week to see if supply is keeping up with demand for those fashionable and seasonable items that women want to buy now.

Boots are undoubtedly in great demand—boots for riding and the other kind you wear with your new Balenciaga suit. Tom Hill, of Knightsbridge Green, is becoming busy and anybody who wants a new pair of riding boots will find they will have to wait between five and six weeks if the boots have to be made to measure. This famous firm, who have been making boots in Knightsbridge for over 60 years, always have some riding and jodhpur boots in stock, so that feet of the right size will be able to walk out of the shop ready shod. Others would be wise to order immediately if they want to be newly shod when the hunting season starts.

Fashion boots are also keeping the shops on their toes. Charles Jourdan, in Bond Street, will make you the thigh-length, Robin Hood kind that Yves Saint Laurent likes, and they will have them in stock at the beginning of October. They are called Natasha and can be bought in aubergine, black or dark brown calf. The price of 24 gn. will be the same whether you are fitted from stock or have to have them made. There is also a good, calf-length, low-heeled boot here



(Above) A beautifully tailored country coat in cognac and cream tweed by Jack Clarke of Dublin. London (Liberty); Leeds (Marshall and Snelgrove); Newcastle upon Tyne (Fenwick); and Cheltenham (Cavendish House)

(Left) Tweed coat and matching skirt in a mixture of russet-brown, black and white. By Brenner. Army and Navy Stores, London; Browns of Chester; and Joseph Johnson, Leicester. Hat by Scotts

that should prove extremely useful for general use (14 gn.). Raoul, in Marylebone High Street, can supply an excellent black leather boot with leather sole for just under £10.

Back to riding and a visit to Moss Bros., who claim to have the biggest saddlery in the world. Their riding-clothes department appears to be just as comprehensive. Here the rider can buy anything he or she wants to wear. Hunting coats in Melton cloth must be made to measure, but there are also many others in different fabrics that can be bought off the peg. There is a big selection, too, of tweed jackets in reliable West of England cloth. Breeches and jodhpurs are stocked in every permutation of leg measurement, and riding and jodhpur boots are both made to measure and held in stock.

On the same seasonable subject, there is a good riding mackintosh at Aquascutum. In the classic off-white colour and belted, it is

efficiently rubberised and is made in sizes from 12 to 18 (11½ gn.).

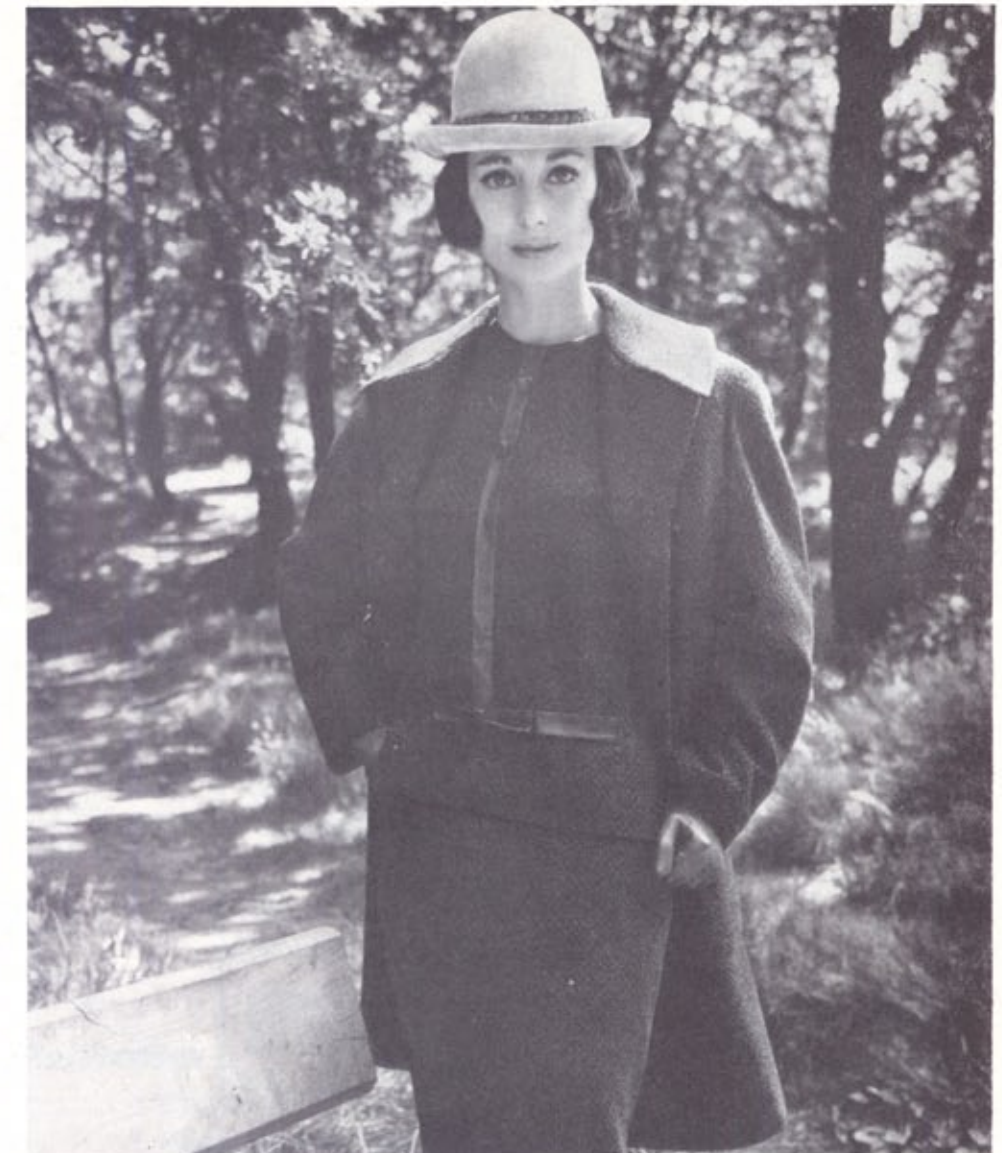
If you have a Givenchy suit this season you will want a pillbox hat to wear with it. I found one at Liberty's (who also have the Givenchy suit) in black leather by Chez Elle (7 gn.). On the other hand, if you are a Cardin devotee, his flat little *cuvé* hat is at Felipe, 137 Park Road, N.W.8, where there are some very pretty fur hats in the winter collection.

## OPEN-AIR LOOKS

THE fresh complexioned look, usually associated with the open air, is the new mode of make-up that is currently displacing the pale-faced, heavy-eyed look of summer. The simplest way to look like a natural beauty, even if you are not one, is with Revlon's Blush On, a compressed luminous powder that is gently brushed over the face with an outsize sable paint-brush after the foundation has been laid. Another route to the healthy look is by way of Faint Blush, by Elizabeth Arden; this rose-tinted cream is worn under the foundation and is good camouflage for fading suntan and dark shadows. The idea behind the so-called translucent complexion is to leave everybody guessing where make-up begins and nature left off. Estée Lauder's Daylight Look gives a truly sunny appearance to the skin. As well as a film-thin foundation, there is a Youth Blend Over Glow to accent bone structure artfully. The accompanying eye shadows are light and very pretty. In this category, too, is Veilence from Charles of the Ritz. This fine foundation (literally a veil) is so coloured and covering it is hard to see it on the skin once it is applied. Colour Secret by Germain Monteil comprises a whole range of fluid tints to wear under make-up. This kind of thing requires practice and skill (with a little sleight-of-hand perfect camouflage for many skin faults can be achieved), but the knack is worth acquiring.

In the issue of September 12 it was stated incorrectly that a Portuguese exhibition will be opening at Fortnum and Mason at the end of October; in fact it will be at Woollands.

ANNE PRICE



(Above) Jumper suit and coat in a bird's-eye Shetland, trimmed with leather. Predominating colours are blue, old-rose or forest-green. Lillywhites. Hat by Herbert Johnson

(Left) Country suit in grey tweed by Sylvia Mills. London (Army and Navy); Newcastle-upon-Tyne (Fenwicks); Belfast (Renee Menely); and Wilmslow (Edith Dennett). Black fur hat by Dorothy Carlton

(Below) The swept-back hairstyle that is exactly right for a bowler-and-boots outfit. By Andre Bernard



DESTROY